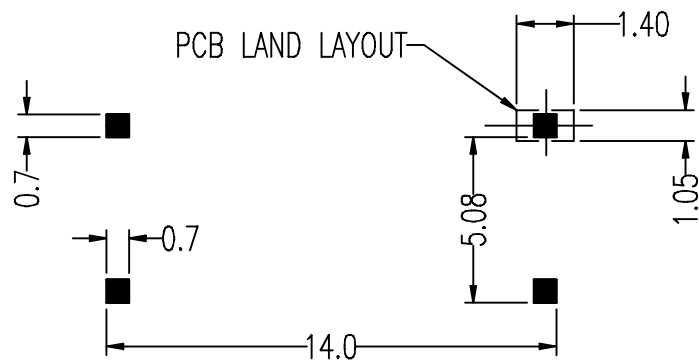


ELECTRICAL CHARACTERISTICS: (TRUE V.34 FOR SMT)

1. DCR : PIN 1-3 =  $150\Omega \pm 10\%$  PIN 4-6 =  $150\Omega \pm 10\%$
2. INDUCTANCE (@250Hz, 0.5Vrms, PARALLEL) : 1-3 = 4.0H MIN.
3. IMPEDANCE (@1KHz, 0dBm, 6-4 W/H 301Ω) : 1-3 =  $600\Omega \pm 2\%$
4. INSERTION LOSS =  $3.3 \pm 0.25\text{dB}$  (@1KHz, 0dBm, W/H 301Ω LOAD)
5. FREQ. RESP. (@300Hz TO 4KHz, REF. 1KHz) =  $\pm 0.1\text{dB}$
6. RETURN LOSS @300Hz = 30dB MIN. @1KHz = 35dB MIN.  
@4KHz = 35dB MIN.
- 7 TURN RATIO =  $1:1 \pm 1\%$
8. POLARITY = PIN 1-6 INPHASE
9. LONGITUDINAL BAL. = 70dB MIN. (@200Hz TO 4KHz)
10. T.H.D (@600Hz, -10dBm) = -82dB MAX.
11. HI-POT = 1250 VAC, 1mA, 2SEC. (PRI.-SEC.)
12. RoHS COMPLIANT



UNLESS OTHERWISE SPECIFIED ALL TOLERANCES ARE  $\pm 0.25$

								TITLE 600 : 301 TRANSFORMER	
RELEASE						UNITS:		SAFETY	
NO:		DESCRIPTION		DATE	BY	CHK	APPD	SHEET 1 of 1	
REVISIONS						DATE		P/N:	
								DRAW	